

# Data\_Link 2000

## APPLICATION NOTE AN021

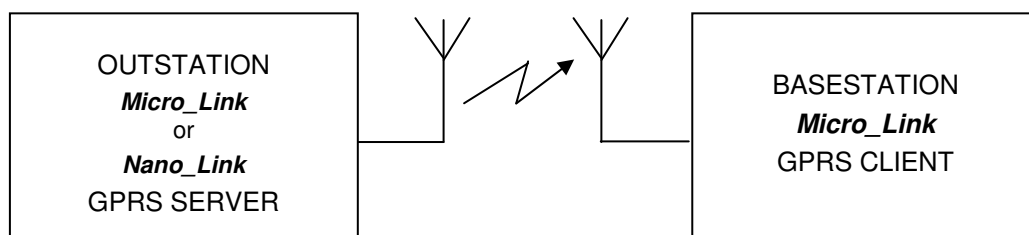
### GPRS

#### Summary

The GPRS\_link provides a communications link between Churchill units using GPRS modem technology. The system comprises standard *Data\_Link 2000* modules fitted with java modem units programmed to provide a permanently connected link between the Churchill units.

#### Implementation

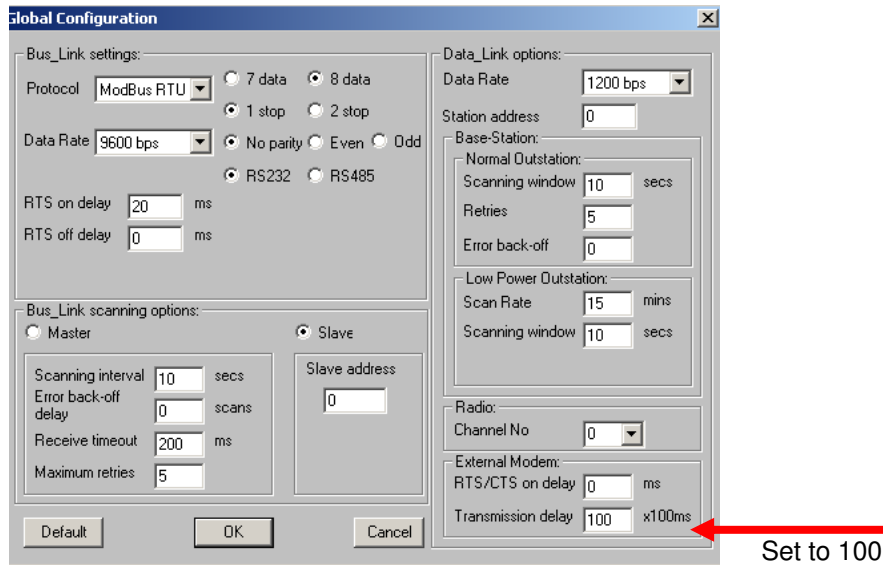
The GPRS modem in the Churchill basestation is configured as a GPRS client device and all the modems in all the Churchill outstations are configured as server devices, the system uses fixed IP SIMS which enables data to be directly exchanged between the GPRS devices. Each GPRS modem unit automatically establishes a connection to GPRS, when the modems are connected a TCP communications link is established.



#### Configuration

The *Micro\_Link* and *Nano\_Link* are configured in the normal way ( see *Nano\_Link* and *Micro\_Link* quick start manuals )

It is necessary however to set a transmission delay using DCD in the *Micro\_Link* basestation as shown below:



The modems are configured using the USB port on the modem Java board using hyper terminal to program the modems.

Ensure that the modem drivers ( Supplied on disc ) are installed on your PC  
 Connect the USB port of the modem in the outstation to your PC and run hyper terminal  
 Identify which serial port has been allocated ( look in device manager ) configure the hyper terminal ASCII settings to enable both

1. "send line ends with line feeds and "echo typed characters locally" next type into hyper terminal.
2. echo typed characters locally

SET APN hostname,username,password  
 SET IP 6000

Check that you have made the right settings by typing:

GET APN your APN should now be displayed.  
 GET IP port number 6000 should now be displayed.

Now connect the USB lead to the basestation modem USB port and type the following:

SET APN hostname,username,password  
 SET IP 6000, IP ( fixed IP address of outstation )

Check that you have made the right setting by typing

GET APN your APN should now be displayed.  
 GET IP port number 6000 should now be displayed.

That's all there is to it its now ready for use.